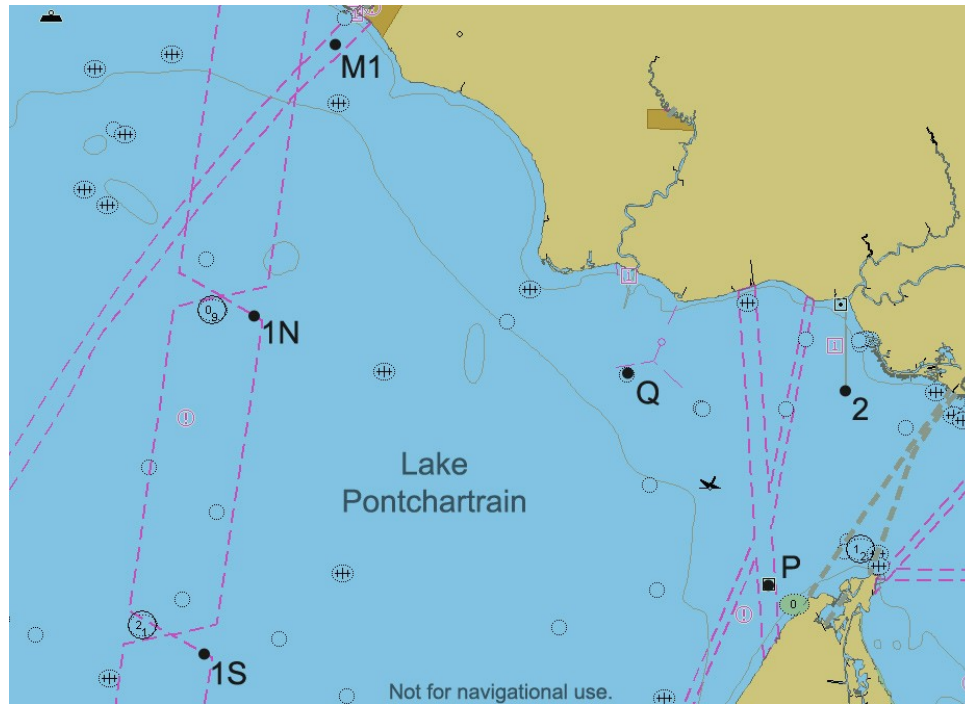


Mark List: All marks are rounding marks

Q – 3 Gas wells south of Bayou Lacombe	Near 30 13.434N 89 57.178W
M1 - Concrete piling off Mandeville	Near 30 20.181N 90 04.058W
2 – Bayou Liberty channel marker	Near 30 13.062N 89 52.048W
1N – Green lighted mark at 16 mile opening in the Causeway	Near 30 14.557N 90 05.871W
1S – Mark at Causeway South hump	Near 30 07.635N 90 07.107W
P – Yellow Tetrahedron replaces Platform	Near 30 09.119N 89 53.769W



Notice: The Race Committee has the right to add, modify or remove any mark from this list prior to the release of the sailing instructions. Please see the sailing instructions for the official list of marks.