

# Two Against the Lake

TAMMANY YACHT CLUB

**Welcome to the 2007 annual Two Against The Lake event.**

- ◆ **LEAVE EARLY** Leave the dock before 8:00 a.m. Remember the Train Bridge? Some past racers remember leaving late and got stopped by the bridge. We start the race on time, so it is important to be there.
- ◆ Look at the Rules - remember to call 68 or any of the Lake Yacht Clubs that are open if you drop out. An attempt will be made to hail on channel 68, but due to distances we have asked for cell phone numbers and will use them.
- ◆ Have a great race! Official time is GPS Time

**Tammany Yacht Club**  
**Two Against The Lake Race**  
**Lake Pontchartrain – N.O.A.A. Chart 11369**  
**March 3, 2006**

**SAILING INSTRUCTIONS**

- 1 **RULES** This race will be sailed under the jurisdiction of the Tammany Yacht Club in accordance with the 2005-2008 Racing Rules of Sailing. These Sailing instructions shall govern in the event of a conflict.
- 2 **ELIGIBILITY** Eligibility shall be limited to mono-hull or multi-hull sailing yachts 22 feet LOA or above with self-bailing cockpit and self-righting capability representing a US Sailing recognized club or sailing association. All yachts must have a valid PHRF certificate or be assigned a handicap by the race committee to include a six second per mile penalty.
- 3 **CREW** Crew is limited to the skipper and one crew member only. Use of Auto-pilots is prohibited.
- 4 **NOTICES TO COMPETITORS** Notices to competitors will be broadcast via VHF (Ch. 68) as necessary.
- 5 **CHANGES TO SI** Any change to the sailing instructions will be broadcast via VHF (Ch. 68) as necessary.
- 6 **SIGNALS MADE ASHORE** There will be none.
- 7 **SCHEDULE** The race is scheduled to start on March 3, 2006 as follows.

|   |                             |
|---|-----------------------------|
| 9:54 am -- "follow me" letter "L" flag comes down |                             |
| 9:55 am --warning signal                          | yellow flag                 |
| 9:56 am – preparatory signal                      | letter "P" flag with yellow |
| 9:59 am – prep flag removed                       | yellow flag                 |
| 10:00 am -- Start,                                | yellow flag removed         |

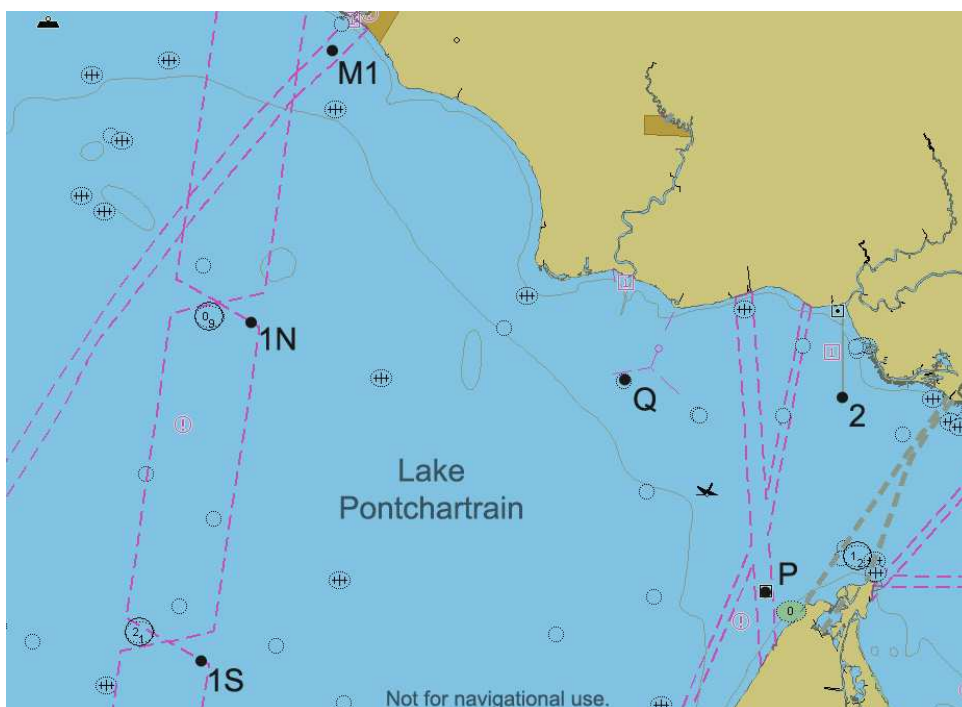
8 **CLASS FLAGS (If Necessary)**

Multi-hull - A  
Spinnaker - B  
Non-Spinnaker - C

- 9 **RACING AREA** The racing area will be the North East portion of Lake Pontchartrain west of the Norfolk and Southern railway bridges.
- 10 **COURSE AND MARKS** The race committee reserves to the right to change the course and direction. Courses will be announced on race day after considering prevailing conditions and fleet makeup. Competitors should expect different courses for Multi-hull, Spinnaker, and Non Spinnaker. The committee boat will announce the courses on VHF as well as post them on a board.

**Mark List: All marks are rounding marks**

|  |                            |
|--|----------------------------|
| Q – 3 Gas wells south of Bayou Lacombe                     | Near 30 13.434N 89 57.178W |
| M1 - Concrete piling off Mandeville                        | Near 30 20.181N 90 04.058W |
| 2 – Bayou Liberty channel marker                           | Near 30 13.062N 89 52.048W |
| 1N – Green lighted mark at 16 mile opening in the Causeway | Near 30 14.557N 90 05.871W |
| 1S – Mark at Causeway South hump                           | Near 30 07.635N 90 07.107W |
| P – Yellow Tetrahedron replaces Platform                   | Near 30 09.119N 89 53.769W |



**11 STARTING AND FINISHING LINES.** The starting line will be in an area adjacent to the Bayou Liberty marker No. 2. The starting line will be between an orange tetrahedron and the staff displaying an orange flag on a committee boat.

Recall of boats on the course side at the start will be in accordance with rule 29 except that in addition to other provisions, the race committee will attempt to hail the yacht's sail number on VHF Channel 68. Failure to hear a hail is not grounds for redress.

The finish line tetrahedron will be in the same location as for the starting line. Yachts shall finish between the Race Committee boat displaying the line flag and the adjacent orange tetrahedron from the direction of the last mark rounded regardless of whether the last mark was left to port or starboard. We will attempt to provide a Committee Boat at the finish, however, upon arrival at the Finish Line

if no Committee Boat is on Station the Finish Line will be deemed to be a line projected due South from Bayou Liberty Mark No 2 for a Distance of 5 boat lengths

- 12 **TIME LIMIT.** There is no limit for the race. We will attempt to provide a Committee Boat at the finish, however, upon arrival at the Finish Line if no Committee Boat is on Station the Finish Line will be deemed to be a line projected due South from Bayou Liberty Mark No 2 for a Distance of 5 boat lengths. If no Committee Boat is on station competitors are instructed record and report their own finishing time.
- 13 **PROTESTS.** Protests are not expected nor encouraged. Course distances are not subject to protest.
- 14 **AWARDS.** Prize awards are TBD and will depend upon the number of entries.
- 15 **SAFETY.** Each skipper has the sole responsibility for the safety of the crew and the seaworthiness of his yacht. Neither these sailing instructions nor the Racing Rules of Sailing shall in any way limit the skipper's responsibility or confer any such responsibility on the sponsoring yacht club or the race committee. The entry form constitutes the skipper's certificate of compliance with these conditions and any breach or violation of these requirements is subject to protest and is the skipper's total responsibility.
- 16 **ABANDONMENT OF RACE.** Withdrawing yachts should notify the committee boat via channel 68 prior to leaving the course. In the event contact cannot be made, notification must be made by telephone to the any Lake YC
- 17 **SPECIAL REGULATIONS FOR NON-SPINNAKER DIVISION.** A single headsail, of the maximum size used for PHRF rating, or smaller, may be carried and tacked at the usual tack point with its luff attached not less than every 36 inches to the forestay by the means provided by the sailmaker.

Fore-staysails shall be allowed if tacked a minimum of 1/3 of the corrected "J" dimension behind the jibe tack point and shall not exceed the rated overlap measurement for which the boat is rated.

Cutter rigs rated as such by the GYA PHRF Rating Committee may set staysails on the tack point provided by the vessel's manufacturer.

- 18 **SKIPPER'S MEETING.** A Skipper's Meeting will be held at Tammany Yacht Club on Friday March 2 at 8:00 PM.